

JRS (HANGZHOU) PERFORMANCE MATERIAL CO., LTD.

# NEEDLEPUNCH NON-WOVEN

# FABRIC



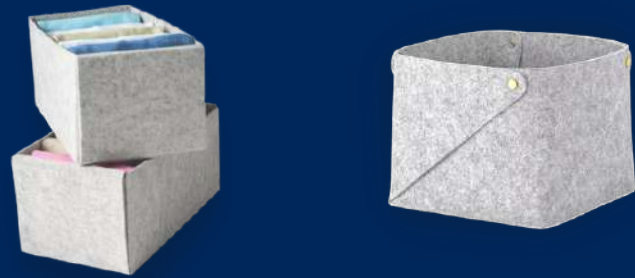
*Right understanding*  
*Right doing*



# Your Products Our Fabrics

**RIGHT UNDERSTANDING. RIGHT DOING**

We take great pride in being a valuable contributor to the creation of exceptional products for your company



Needle Punched Fabrics



# WHO WE ARE

- ◆ JRS (HANGZHOU) Performance Material Co.,Ltd is a Chinese company with 100% locally-owned capital and over 16 years of experience in manufacturing and trading.
- ◆ Our extensive range of products includes Needle Punching Fabric (Felt, Kubu), Padding (Sheet, Roll), Faux Down, Interlining (Non-woven Fusible Interlining, Woven Fusible Double Dot, Tricot, Melting), Quilting Services and Non-woven Fabric
- ◆ We take pride in contributing significantly to the success of well-known major brands, such as Daiso, Nike, Toyota, Hyundai, IKEA, KIA, The North Face, Coach, Lululemon, among others
- ◆ Millions meters of fabric are exported to bring more convenient and widely application in daily life



**Factory 1**

# MARKET SIZE



- ◆ At our company, we prioritize the thorough examination of raw materials, the manufacturing process, as well as the packaging, storage, and transportation of goods
- ◆ We increasingly asserted our position not only in domestic market but also many countries around the world such as USA, Australia, Germany, France, Indonesia, Japan, Korea,...



DOMESTIC  
45%

EXPORT  
55%

TOP EXPORT PRODUCT

Needle Punched Fabrics (Felt)

# LAB DEPARTMENT

# CERTIFICATES

- ◆ Our factory has a fully-equipped laboratory where we conduct various tests, including tensile strength and elongation tests, among others
- ◆ We utilize state-of-the-art testing machines such as Gotech from Taiwan and Mitutoyo from Japan to ensure that our products meet our customers' stringent quality requirements



◆ The IATF certification guarantees that our products meet the stringent quality requirements of the automotive industry's supply chain

◆ All of our nonwoven fabric products meet the stringent requirements of OEKO-TEX Standard 100, which is one of the most prestigious certifications in the clothing and textiles industry

◆ Our GRS certification enables customers to access recycled materials while also ensuring restrictions on the use of harmful chemicals, which contributes to a sustainable and environmentally-friendly approach



# Clients

HUYNDAI

NIKE

COACH

IKEA

TOYOTA

ADIDAS

LULULEMON

DAISO

THACO

THE NORTH FACE

MICHAEL KORS

KIA

## ◆ AUTOMOTIVE INDUSTRY

HUYNDAI  
TOYOTA  
THACO  
KIA

## ◆ FOOTWEAR INDUSTRY

NIKE  
ADIDAS  
THE NORTH FACE

## ◆ LUGGAGE & BAGS INDUSTRY

COACH  
LULUMEMON  
MICHAEL KORS

## ◆ FURNITURE AND RETAIL INDUSTRY

IKEA  
DAISO

The companionship of major branch continuously for many years is a testament to our quality & service.

---

# Products

Needle Punched Fabrics ◆

Quilting ◆

Padding ◆

Faux Down ◆

PP Spunbond ◆

Interlining ◆



TOP EXPORT PRODUCTS

## NEEDLE PUNCHED FABRICS

(Felt, Kubu)



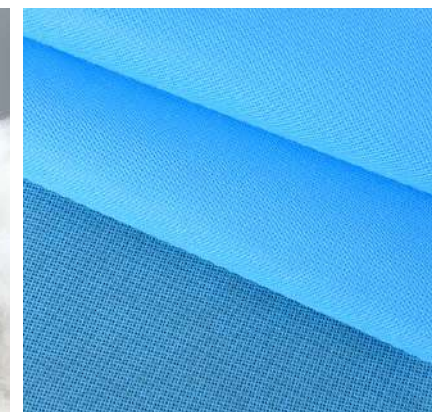
QUILTING



PADDING



FAUX DOWN



PP SPUNBOND



INTERLINING

# NEEDLE PUNCHED FABRICS



## SPECIFICATIONS

<b>Capacity</b>	: 15.000 tons/ year ~ 30 million meters/ year
<b>Width</b>	: 40", 44", 58", 60", max 138"
<b>Weight</b>	: 60gsm - 1.500gsm
<b>Thickness</b>	: 0.3mm - 40mm

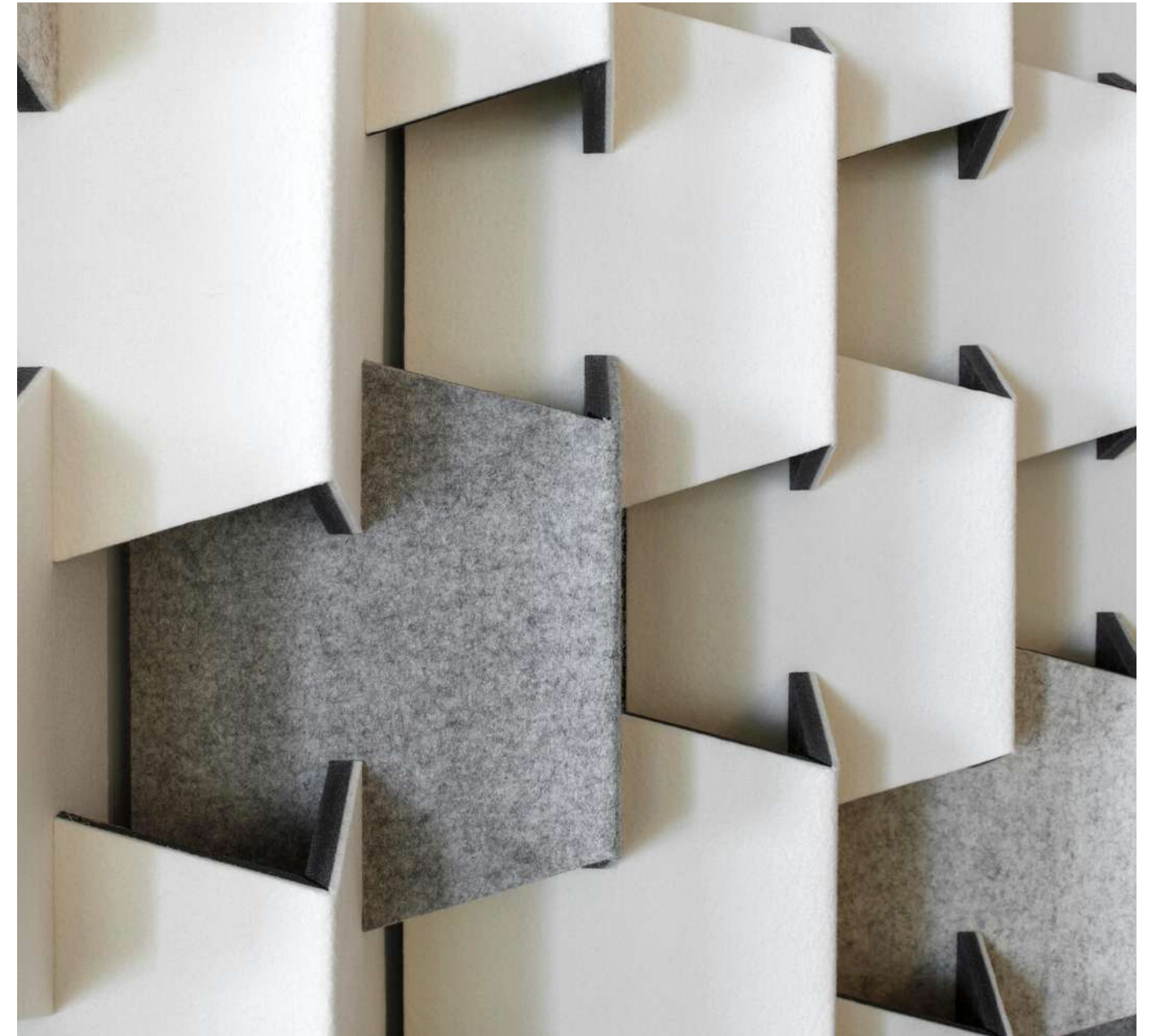


## APPLICATIONS

- ◆ Automotive
- ◆ Grow Bags
- ◆ Geotextiles
- ◆ Shoes Insole
- ◆ Felt Roofing
- ◆ Sofa Lining
- ◆ Filtration
- ◆ Handmade
- ◆ Carpet
- ◆ Weed Control Fabrics

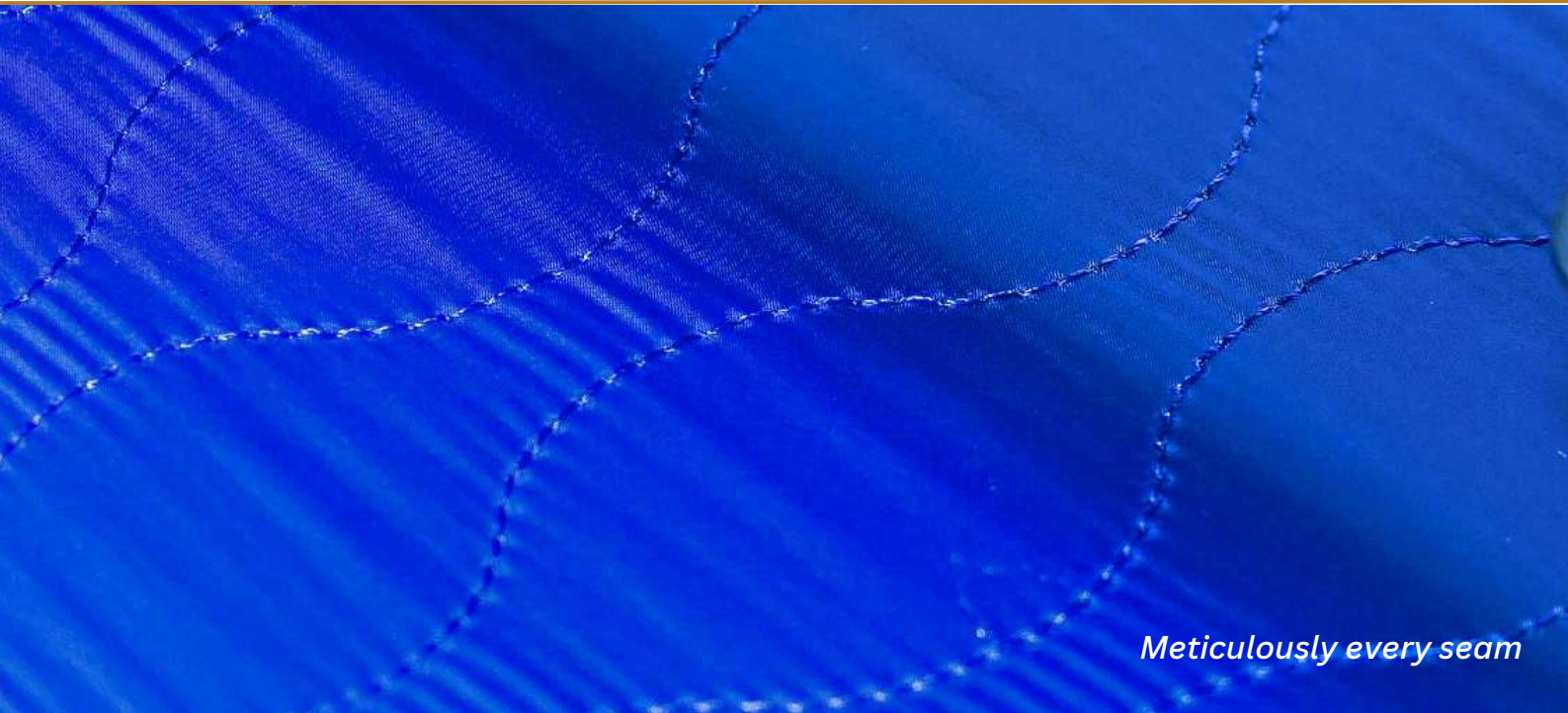
**durable  
 versatile  
 insulating**

ENHANCE THE QUALITY OF YOUR PRODUCT  
WITH OUR PREMIUM OFFERINGS



*Needle-punched fabric (felt, kudu) is known for its outstanding qualities and versatile applications in various fields of life and industry*

# QUILTING

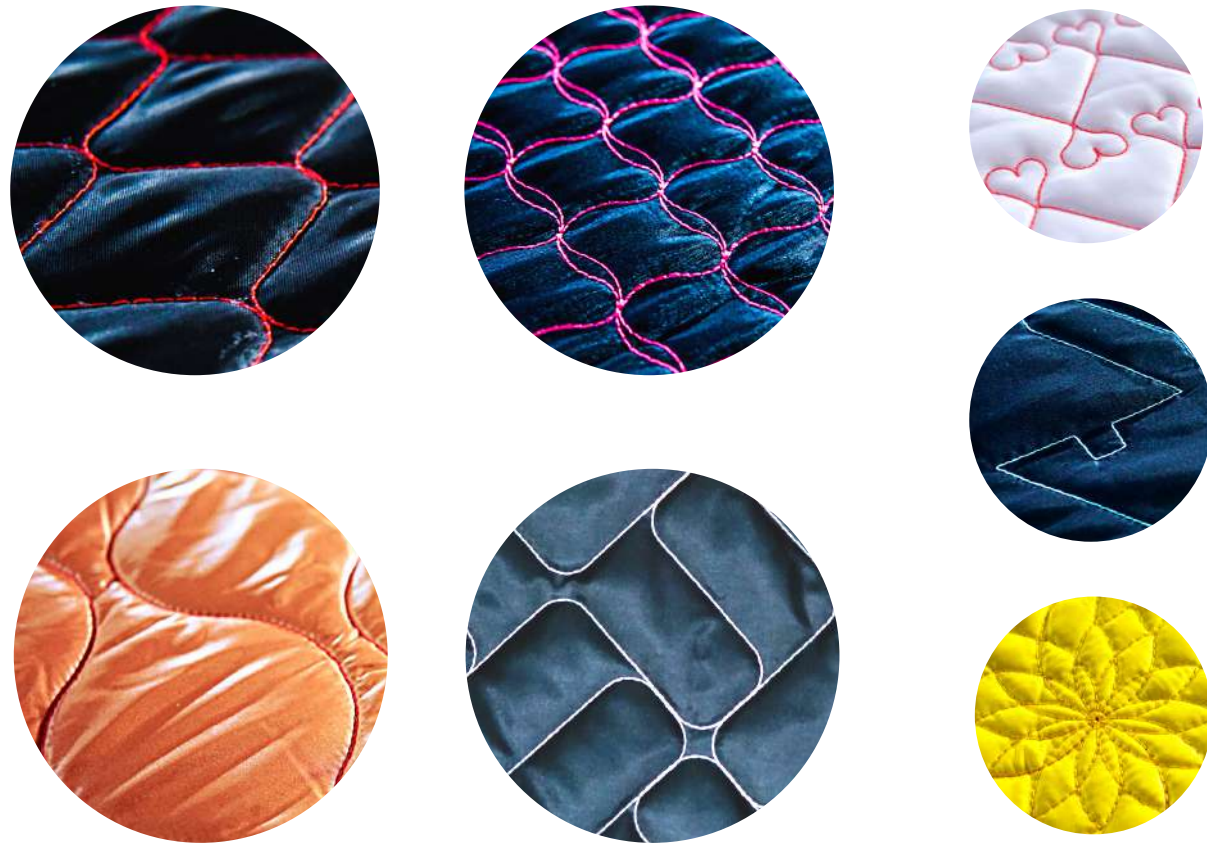


## SPECIFICATIONS

- Capacity** : 8 million meters/ year
- Width** : 64", 94"
- Weight** : 40gsm - 300gsm
- Thickness** : 1.0mm - 50mm
- Design** : In library and customer requirements

## APPLICATIONS

- ◆ Jacket
- ◆ Blanket
- ◆ Mattress



Browse our company's assortment of quilt patterns



# PADDING

# FAUX DOWN



## SPECIFICATIONS

- Capacity** : 5.000 tons/ year ~ 12 million meters/ year
- Width** : 44", 58", 60", max 138"
- Weight** : 80gsm - 1.500gsm
- Thickness** : 0.3mm - 40mm

## APPLICATIONS

- ◆ Jacket
- ◆ Mattress
- ◆ Blanket
- ◆ Topper



## SPECIFICATIONS

- Cut Length** : 32mm, 38mm, 51mm
- Weight** : 30 Kgs/ Package
- Fiber** : 0.7D, 0.8D, 0.9D, 7D, 15D

## APPLICATIONS

- ◆ Pillow
- ◆ Soft Toys, Plush Toys
- ◆ Jacket
- ◆ Blanket



# PP SPUNBOND

# INTERLINING - MEX



## SPECIFICATIONS

**Capacity** : 4.000 tons/ year ~ 10 million meters/ year  
**Width** : 160cm, 240cm  
**Weight** : 12gsm - 230gsm

## APPLICATIONS

- ◆ Medical protective gears
- ◆ Face mask
- ◆ Tree cover
- ◆ Shopping bag

## SPECIFICATIONS

**Capacity** : 20 million meters/ year  
**Width** : 36", 40", 44", 60"  
**Weight** : 15gsm - 80gsm  
**Coating** : Doule dot PA, PES

## APPLICATIONS

- ◆ Vest
- ◆ Dress
- ◆ Polo, Shirt
- ◆ Bed nets



*Interlining is an essential material in the garment industry with a wide range of applications*

THANK YOU

## CONTACT US

### Hangzhou Office

Room 312, 3rd Floor, No. 268  
Daguan Road, Gongshu District,  
Hangzhou ZHEJIANG PROVINCE,  
China

### Yiwu Office

Room 2101-1, Building B,  
Wanda Office Building,  
Choujiang Street, Yiwu, Jinhua,  
Zhejiang, China

### Factories


#### Factory 1:

No.55, Yingying Avenue, Renyang, Zhitang  
Town, Changshu City

#### Factory 2:

No.10 Baochang Road, Automobile  
Industrial Park, Yizheng City

For any inquiries or feedback, please contact:

**HOTLINE**  +86 186 0579 8634



caroline@jrsmaterial.com